

# Rooted in Resilience: The Story of the Kansas Farmers Union



Kansas Farmers Union State Convention

November 18-19, 2025

Drury Plaza Hotel Broadview, Wichita, Kansas

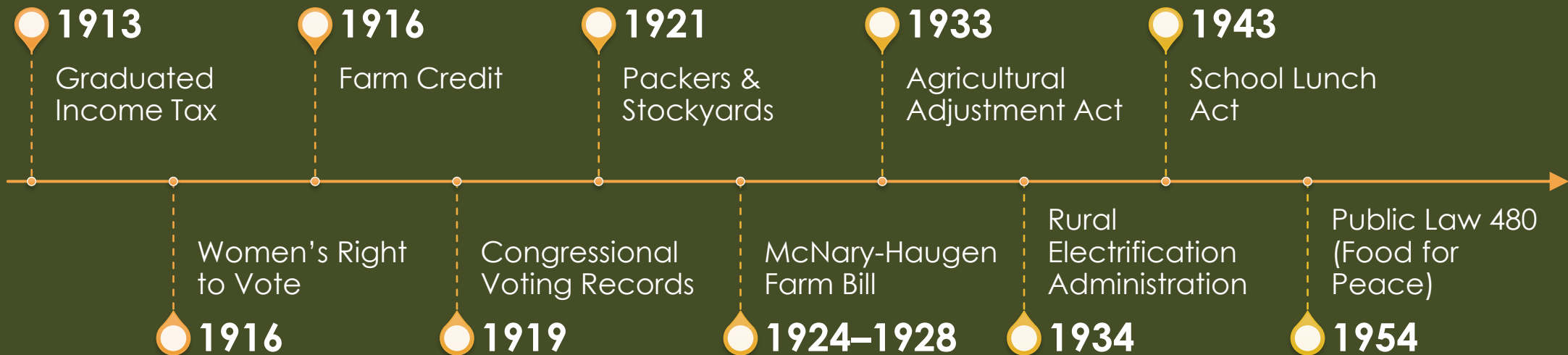




# Kansas Farmers Union Convention, 1915



# Early Legislative Issues





# Kansans in National Leadership: James Patton and Tony Dechant





First State  
Office after  
rechartering  
McPherson,  
Kansas 1974







# Working Membership, Early 1970s





NON-PROFIT ORGANIZATION  
U.S. POSTAGE  
PAID  
PERMIT NO. 11  
KINSLEY, KANSAS 67547

**fu** Farmers Union  
Kansas Kontakt

VOL. 2, No. 2

February, 1973

Jim Ploger, Editor

## BUS AND PLANE TO NFU CONVENTION

OMAHA - Kansans will have an opportunity to go either by air or bus to the upcoming National Farmers Union Convention to Omaha. A chartered Silver Eagle Bus will leave from Dodge City on Sunday morning, March 11, traveling through Kinsley, Sanford, Lacrosse, Hays, Stockton and Phillipsburg. The new Farmers Union Convair 580 will be leaving from Salina early Sunday afternoon to take a load to Omaha. Space will be limited to 48 passengers. The cost of a package tour including transportation (air or bus), hotel, banquet and Kansas breakfast tickets is \$75. Kansas will be headquartered in the pleasant Paxton Hotel in Omaha. Both the bus and plane will return on March 15. Please return the form at the bottom of this page right away to reserve spaces.

### TASK FORCES ACTIVITY GROWING

HAYS - Activity is stirring in the Task Forces organized late last fall. Forces were organized on Corporation Farming, Taxes and School Finance, Strip Mining, Livestock Marketing and Youth Activities.

A meeting of the Corporation Farming and Tax Task Forces was held in Hays just before Christmas. A survey questionnaire has been prepared on school finances and has been distributed to areas across the state for school districts to respond. A letter to Kansas bankers is now being prepared to express concerns of the corporate invasion into agriculture, thanks to a concerned banker in Haviland.

A number of people made a trip to Lincoln, Nebraska, to find out more about a new Tele-type Marketing system for livestock.

A meeting to discuss the results of strip mining was held recently to plan possible tours into mining areas to make other areas of Kansas more aware of problems of strip mining.

The youth task force met twice since the first of the year and now has ten county and area youth camps planned during the coming summer.

### LEGISLATIVE REPORT FROM TOPEKA

TOPEKA - Dale Lyon, legislative director of Kansas Farmers Union, reports that there are a couple of items of concern to Farmers Union members now being considered in Topeka.

A corporation farm reporting bill, HR 1013, has been reported out of the Agriculture Committee and is now in the Judiciary Committee.

There are two school finance measures now under consideration. One is the Joint Committee on School Finance bill and the other is the Administration's proposal. Dale says he feels that there is rough sledding ahead for both of the bills and a compromise is likely between the two of them.

NFU NATIONAL CONVENTION March 11-15, 1973 OMAHA, NEBRASKA

Name \_\_\_\_\_ Number of Persons \_\_\_\_\_

Address \_\_\_\_\_ I will \_\_\_\_\_ by BUS \_\_\_\_\_

City \_\_\_\_\_ travel: \_\_\_\_\_ by PLANE \_\_\_\_\_

Telephone Number \_\_\_\_\_ (Hotel only if by car) \_\_\_\_\_ by CAR \_\_\_\_\_

MAIL TO: Jim Ploger, R.F.D. 2, Box 134, Kinsley, Kansas 67547

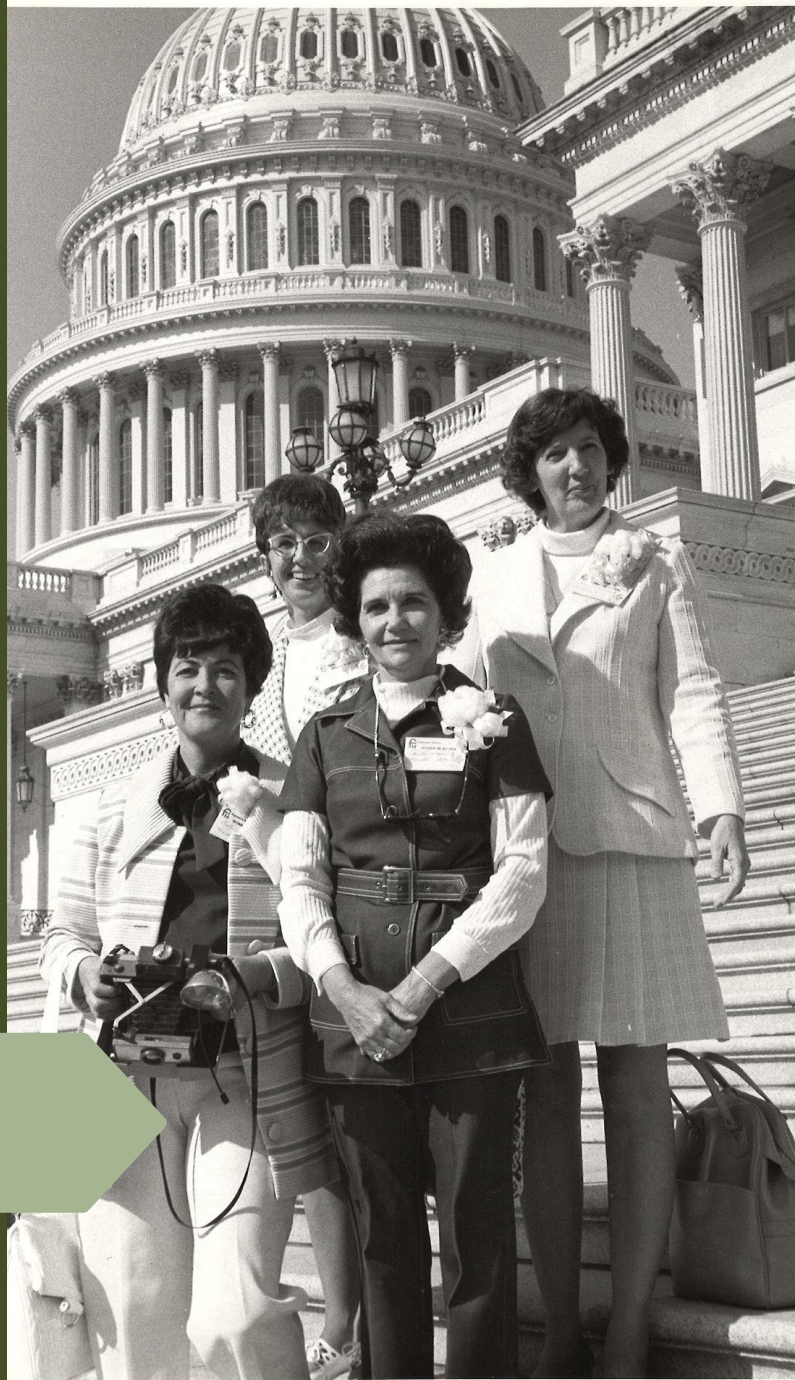




# KFU Women's Dinner with Bob Dole



# Kansas Farmers go to Washington, 1974





# Kansas Farm - Labor Coalition collects and distributes food October 1984







Larned, Kansas 1984





Rural Crisis Rally, Topeka Kansas 1985





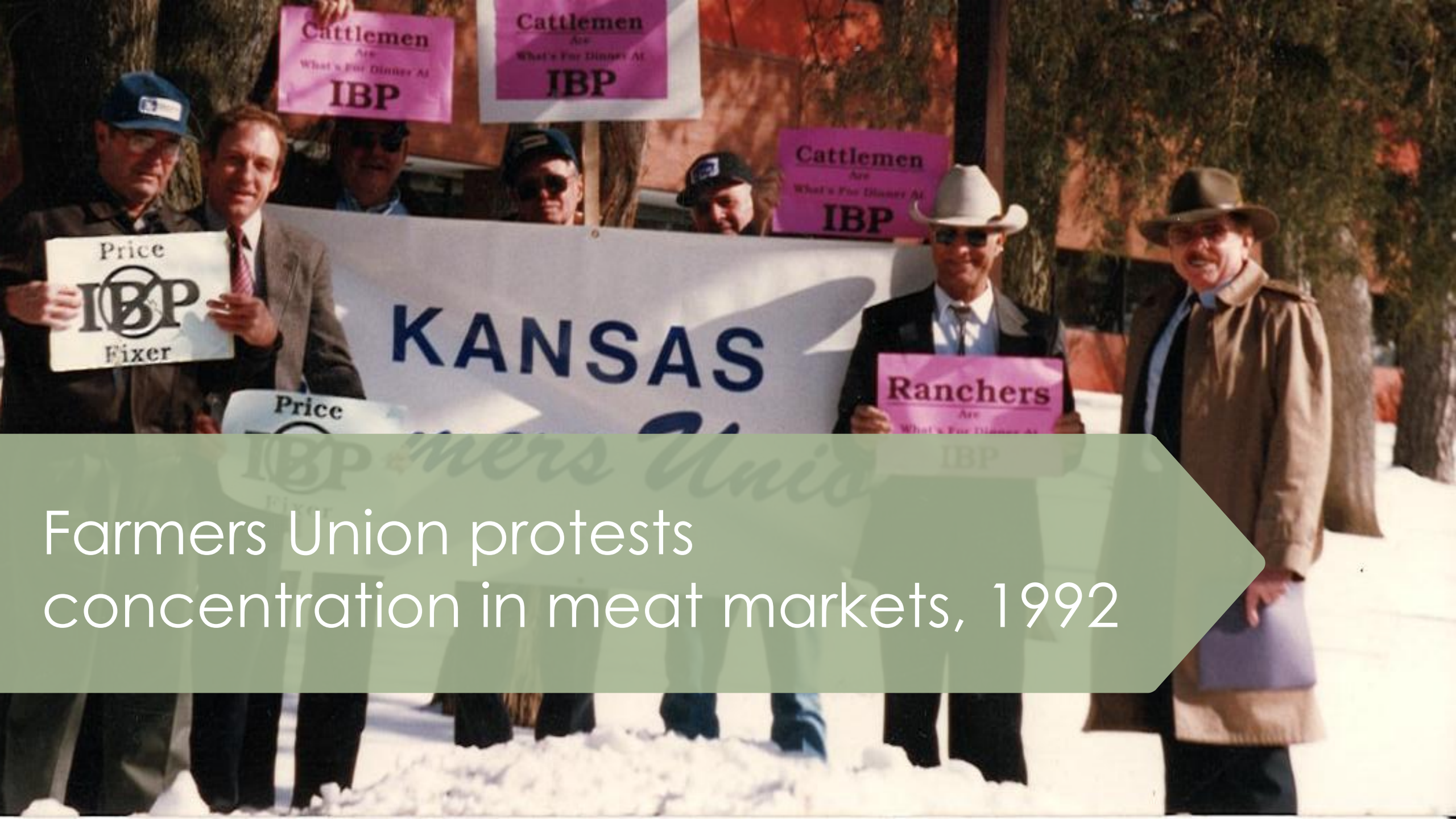
Farmers Union promotes Fair Trade  
with Mexican Farmers, 1992





Farmers  
Union fights  
corporate  
hog  
farms, 1994





Farmers Union protests  
concentration in meat markets, 1992





Farmer protest of  
1996 Freedom to  
Farm Legislation,  
Wichita Kansas



# Who is Farmers Union

*I shall neither paint you a picture of the Farmers Union with wings sprouting on its shoulders, nor with horns and cloven hoof. You can get the truest picture of the Farmers Union by holding up a mirror before its members, including yourself. The Farmers Union is no better and no worse than its members.*

*It is endowed with the same frailties of human nature, with which you and I are endowed. It has the same potentiality which you and I have, of sinking to the lowest depths of degradation and yet it is endowed, as you and I are endowed with that peculiar something – something which cannot be expressed in words: that peculiar something which enables us to rise to heights undreamed of, if we will put our mind, our heart, and our soul into a sincere and determined effort to convert our ideals into a living, breathing reality.*

J. Henry Meyer  
Girard, Kansas

Kansas Union Farmer, circa 1924



Elevators at the former  
Farmers Union national  
office in Denver,  
Colorado.

A reminder that every  
movement has its ups  
and downs, but it is our  
collective resilience is  
what keeps us rising.

